

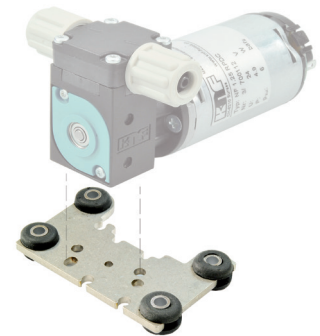
MONTAGEPLATTE-KIT ID NR. 164 313

MOUNTING PLATE KIT

Inhalt

Content

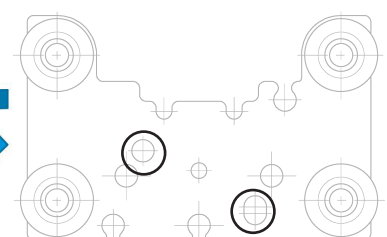
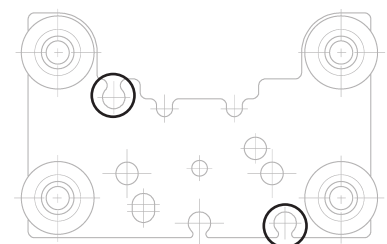
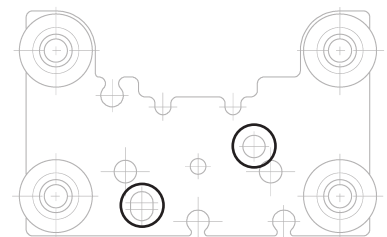
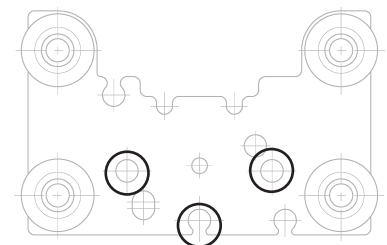
Stk. / pcs.	Material / material	Dimension / dimension
1	Montageplatte / mounting plate	54x34mm
2	Schraube / screw	KA30x6
2	Schraube / screw	M3x8
3	Schraube / screw	K30x8



Loch- und Schraubenauswahl

Hole and Screw selection

Pumpentyp pumpe type	Schraube screw	Stk. pcs.	Zeichnung picture	Werkzeug (nicht inkl.) tool (not incl.)
FL 10	K30x8	3		Schraubendreher Torx T10 screwdriver Torx T10
NF 5	KA30x6	2		Kreuzschlitzschraubendreher phillips screwdriver
NF 1.5				
NF 10				
NF 1.10				
NF 25				
NF 1.25				
NF 30*	M3x8	2		Schraubendreher Torx T10 screwdriver Torx T10
NF 1.30				
NF 60*				
FP 70				
NMP 830				
NMP 830 HP				
NPK 04				
FF 12	K30x8	2		Schraubendreher Torx T10 screwdriver Torx T10
FF 20				



Montageplatte gespiegelt
Mounting plate mirrored

*) Montageplatte ist nicht mit AM54 Motor kompatibel (DCB)!
Mounting plate is not compatible with motor type AM54 (DCB)!

MONTAGEPLATTE-KIT ID NR. 164 313

MOUNTING PLATE KIT

Masse Dimensions

