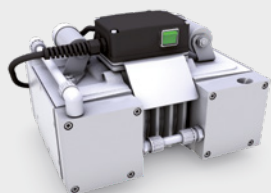
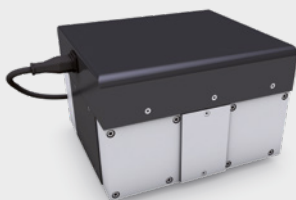


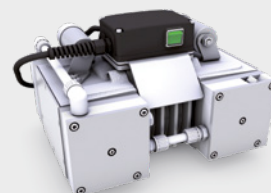
N 940.5 SERIES VACUUM PUMPS



N 940.5 APE – AC version with IP 54 motor



N 940.5 APE-W – automatically adjusts to voltage conditions, can be used worldwide (optional potentiometer or port for external control)



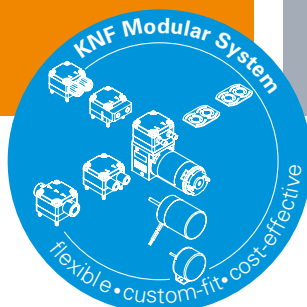
N 940.5 TTE – chemically resistant with IP 54 motor

ADVANTAGES

- Quiet running
- High level of performance in a compact size
- Multi-voltage power supply input
- High-speed evacuation of the measurement chamber thanks to exceptional suction speed
- Stable vacuum in the transfer area to the turbomolecular pump
- High chemical resistance offered by N 940.5 TTE

POSSIBLE AREAS OF USE

- Instrumental analysis – especially in the field of spectroscopy
- Can be used as roughing pump for turbomolecular pumps
- Diagnostics – disposal of sample waste



Please visit our website
www.knf.com
to get more information

PERFORMANCE DATA

| Series model | N 940.5 | | |
|---|-------------|-----------|-----------|
| Material design | APE | APE-W | TTE |
| Pump head | Aluminum | | PTFE/PVDF |
| Diaphragm | EPDM | | PTFE |
| Valves | EPDM | | FFPM |
| Flow rate at atm. pressure (l/min) | 50.0 | | 48.0 |
| Ultimate vacuum (mbar abs.) | < 1.5 | | 2 |
| Max. operating pressure (bar rel./psig) | 0.5/7.3 | | |
| Permissible ambient temperature (°C) | +10 ... +40 | | |
| Permissible media temperature (°C) | +5 ... +40 | | |
| Weight (kg/lbs) | 18.9/41.6 | 16.8/37.0 | 18.6/40.9 |

ELECTRICAL DATA

| | | | |
|--------------------------|-----------------|---|-----------------|
| Voltage (V) | 230 | 100–240 | 230 |
| Motor | Capacitor motor | Brushless DC motor with AC power supply | Capacitor motor |
| Protection class motor | IP 54 | IP 20 | IP 54 |
| Frequencies (Hz) | 50 | 50/60 | 50 |
| Power P ₁ (W) | 250 | 250 | 250 |
| I _{max} (A) | 1.70 | 2.80 | 1.70 |

ACCESSORIES

| Description | Part No. | Details |
|--|-----------|--|
| Silencer | 045993 | G 3/8 |
| Adapter for silencer | 014757 | G 3/8 to G 1/4 |
| Small flange, stainless steel | 048116 | G 1/4, KF DN 16 |
| Hose connector, Ms (only for N 940.5 APE/APE-W) | 049880 | G 1/4, for hose ID 13 |
| Hose connector, PP | 045293 | G 1/4, for hose ID 10 |
| Sealing for hose connector, Ms (only for N 940.5 APE/APE-W) | 029112 | |
| Adjustable delivery by speed regulation for N 940.5 APE-W | on demand | with potentiometer or analog signal input |

SPARE PARTS

| Description | Part No. | Details |
|------------------------------------|----------|----------|
| N 940.5 APE N 940.5 APE-W | | |
| Diaphragm | 112089 | |
| Valve plate | 112130 | |
| O-ring | 112122 | Ø 32 mm |
| O-ring | 112121 | Ø 26 mm |
| O-ring | 112123 | Ø 5.5 mm |
| N 940.5 TTE | | |
| Diaphragm (with marking) | 116787 | |
| Diaphragm (without marking) | 117534 | |
| Valve plate | 118007 | |
| O-ring | 116407 | Ø 32 mm |
| O-ring | 002454 | Ø 24 mm |
| O-ring | 059725 | Ø 5.5 mm |

The performance values for the series models shown on this data sheet were determined under test conditions. The actual performance values may differ and depend in particular on the usage conditions and therefore on the specific application, on the parameters of the components involved in the user's system and on any technical modifications carried out which deviate from the standard configuration or the as delivered condition.

If individual designs have been created for specific customers on the basis of series models, other technical performance data may apply.

Before operation begins, the relevant operating instructions and/or assembly or installation instructions should be read and the safety information contained in these instructions should be noted.

KNF reserves the right to make changes to the product and the associated documentation without prior notice to the customer.



www.knf.com

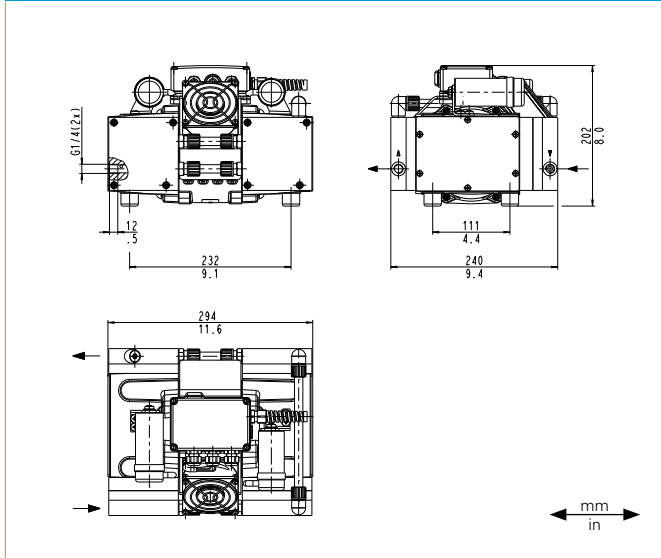
N 940.5 APE

PERFORMANCE DATA

| Series model | Flow rate at atm. pressure (l/min) ¹⁾ | Max. operating pressure (bar rel./psig) | Ultimate vacuum (mbar abs.) |
|--------------|--|---|-----------------------------|
| N 940.5 APE | 50.0 | 0.5/7.3 | < 1.5 |

¹⁾ Liter at STP

N 940.5 APE



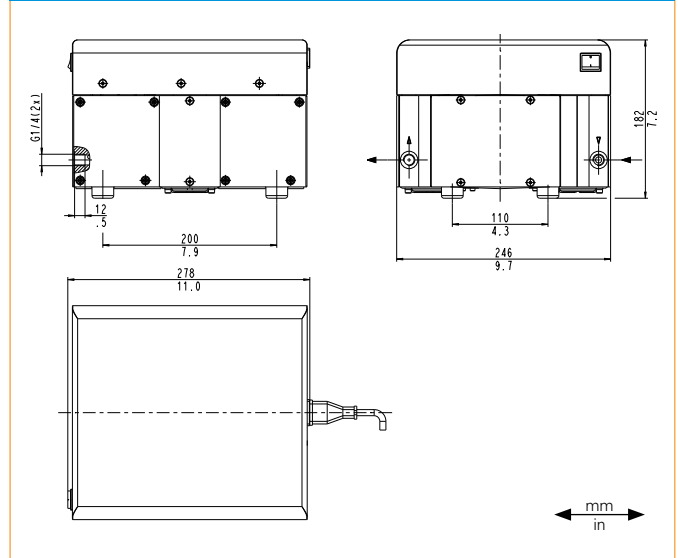
N 940.5 APE-W

PERFORMANCE DATA

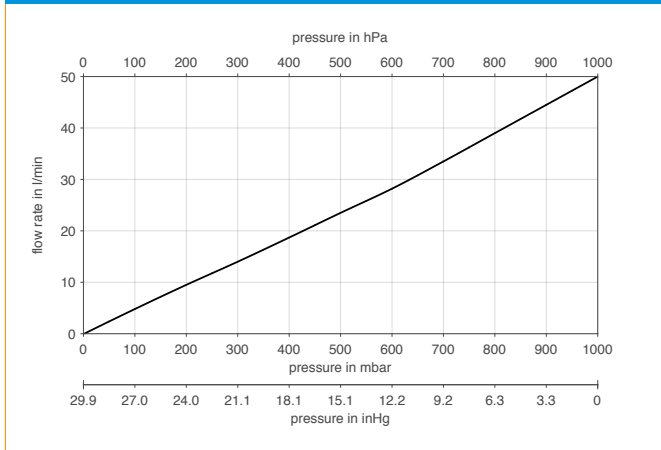
| Series model | Flow rate at atm. pressure (l/min) ¹⁾ | Max. operating pressure (bar rel./psig) | Ultimate vacuum (mbar abs.) |
|---------------|--|---|-----------------------------|
| N 940.5 APE-W | 50.0 | 0.5/7.3 | < 1.5 |

¹⁾ Liter at STP

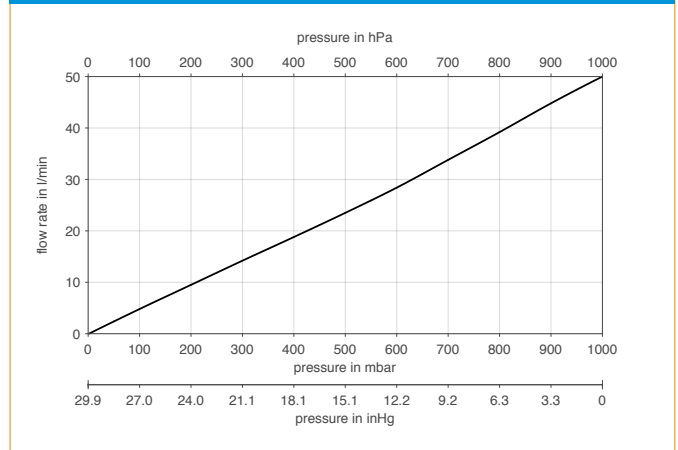
N 940.5 APE-W



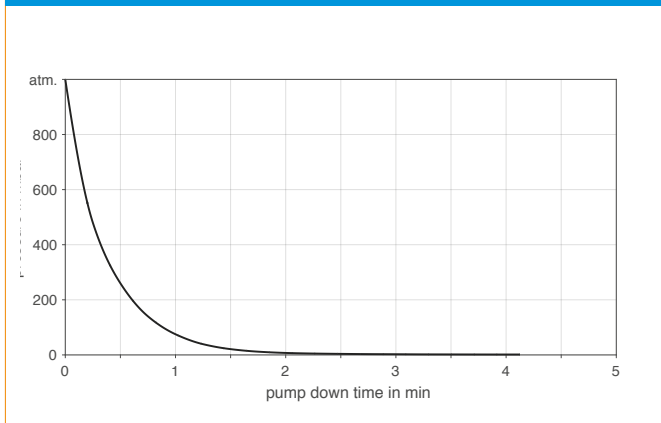
N 940.5 APE



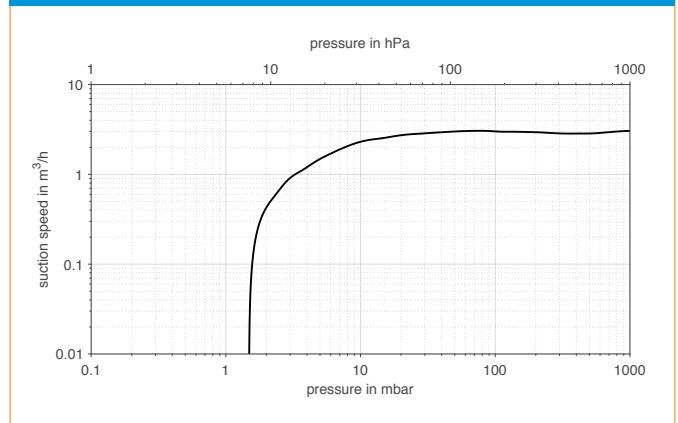
N 940.5 APE-W



N 940.5 APE | APE-W | PUMP DOWN TIME FOR 20 LITER VESSEL



N 940.5 APE | APE-W | SUCTION PUMPING SPEED



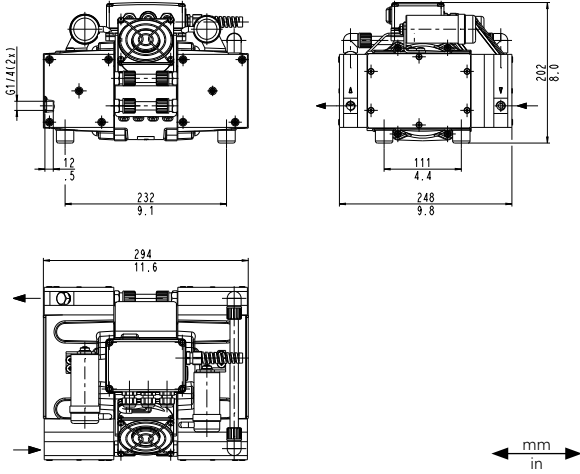
N 940.5 TTE

PERFORMANCE DATA

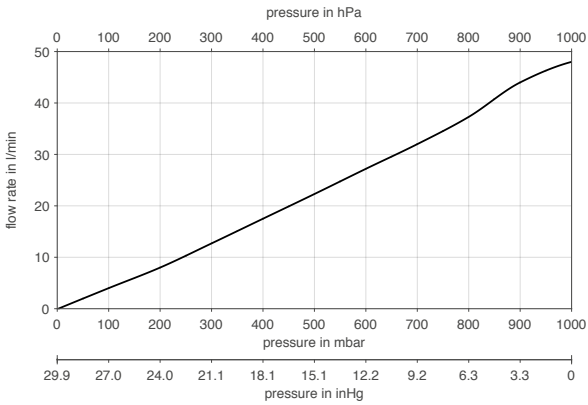
| Series model | Flow rate at atm. pressure (l/min) ¹⁾ | Max. operating pressure (bar rel./psig) | Ultimate vacuum (mbar abs.) |
|--------------|--|---|-----------------------------|
| N 940.5 TTE | 48.0 | 0.5/7.3 | 2 |

¹⁾ Liter at STP

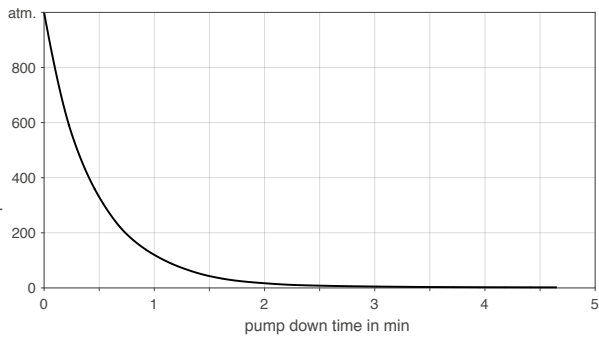
N 940.5 TTE



N 940.5 TTE



N 940.5 TTE | PUMP DOWN TIME FOR 20 LITER VESSEL



N 940.5 TTE | SUCTION PUMPING SPEED

