

NMP 830 HP SERIES MICRO DIAPHRAGM GAS PUMPS

Up to 9 LPM Free Flow



NMP 830KPDC HP



NMP 830KPDC-B HP



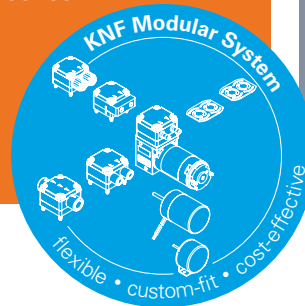
NMP 830.1.2KPDC-B HP

ADVANTAGES

- High pneumatic performance
- Compact size/high power density
- Uncontaminated flow – no contamination of the media due to oil-free operation
- Maintenance-free
- Long product life
- Can operate in any orientation
- All materials FDA certified
- ONE pump for vacuum and pressure application
- < 50 mbar abs possible with 2 heads in series

POSSIBLE AREAS OF USE

- Medical
- Reprographic
- Environment
- Security
- Food



Please visit our website
www.knf.com
to get more information

PERFORMANCE DATA

Series model	NMP 830 HP						NMP 830.1.2 HP			
	KPDC		KPDC-B		KPDC-B4		KPDC-B		KPDC-B4	
Pump head	PPS						PPS			
Diaphragm	EPDM (FKM and PTFE on request)						EPDM (FKM and PTFE on request)			
Valves	EPDM (FKM and FFKM on request)						EPDM (FKM and FFKM on request)			
Flow rate at atm. pressure (l/min)	5		5		5		9		9	
Ultimate vacuum (mbar abs.)	230		230		230		230		230	
Ultimate pressure (bar g)	3		3		3		3		3	
Permissible media and ambient temperature	5° C to 40° C / 41° F to 104° F (-20° C to 60° C / -4° F to 140° F on request)									
Weight (g/oz)	185/6.53		170/6		170/6		230/8.11		230/8.11	

ELECTRICAL DATA

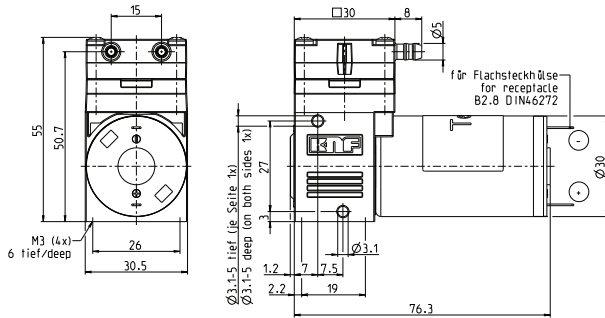
Voltage (V)	12	24	12	24	12	24	12	24	12	24
Motor	DC		Brushless DC, 2 wire		Brushless DC, 4 wire		Brushless DC, 2 wire		Brushless DC, 4 wire	
I _{max} (A)	0.9	0.5	0.85	0.45	0.85	0.45	1.5	0.8	1.5	0.8

NMP 830KPDC HP

PERFORMANCE DATA

Series model	Flow rate at atm. pressure (l/min)	Max. operating pressure (bar g)	Ultimate vacuum (mbar abs.)
NMP 830KPDC HP 12V	5	3	230
NMP 830KPDC HP 24V	5	3	230

NMP 830KPDC HP



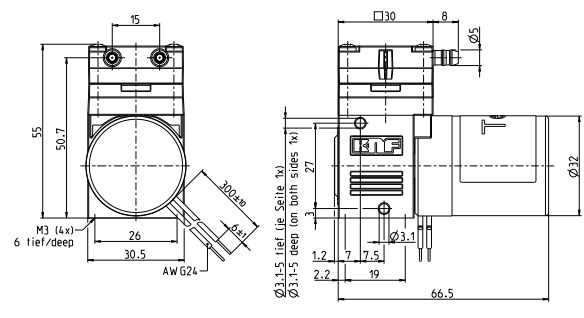
Dimensions in mm

NMP 830KPDC-B HP

PERFORMANCE DATA

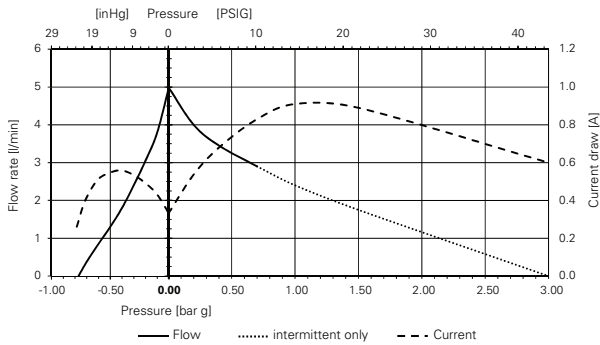
Series model	Flow rate at atm. pressure (l/min)	Max. operating pressure (bar g)	Ultimate vacuum (mbar abs.)
NMP 830KPDC-B HP 12V	5	3	230
NMP 830KPDC-B HP 24V	5	3	230
NMP 830KPDC-B4 HP 12V	5	3	230
NMP 830KPDC-B4 HP 24V	5	3	230

NMP 830KPDC-B HP

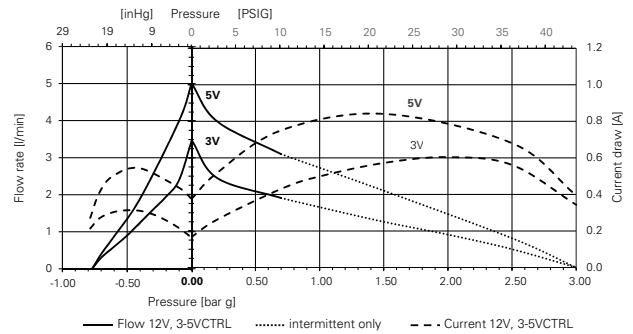


Dimensions in mm

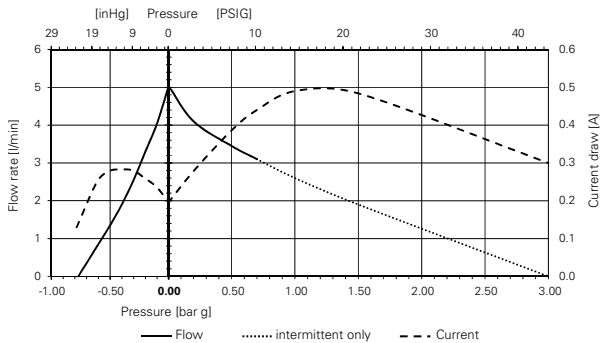
NMP 830KPDC HP 12V



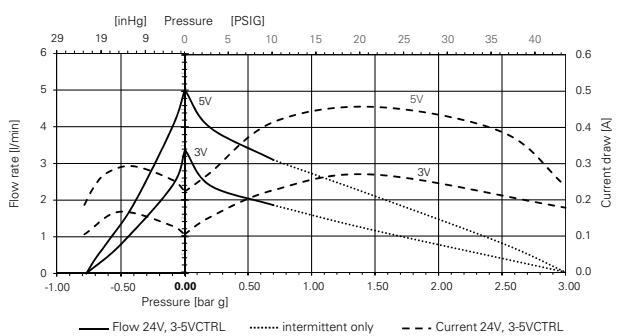
NMP 830KPDC-B HP 12V



NMP 830KPDC HP 24V



NMP 830KPDC-B HP 24V

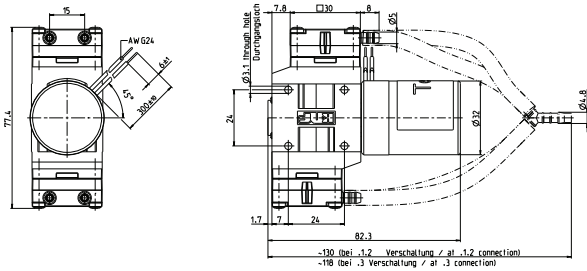


NMP 830.1.2KPDC-B HP

PERFORMANCE DATA

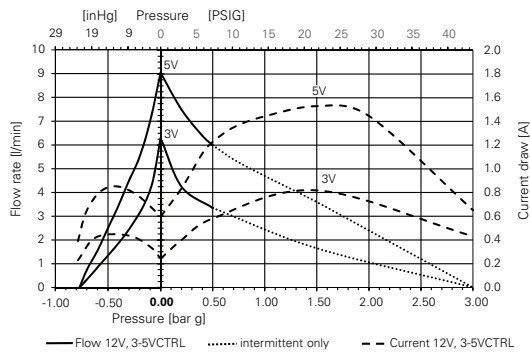
Series model	Flow rate at atm. pressure (l/min)	Max. operating pressure (bar g)	Ultimate vacuum (mbar abs.)
NMP 830.1.2KPDC-B HP 12V	9	3	230
NMP 830.1.2KPDC-B HP 24V	9	3	230
NMP 830.1.2KPDC-B4 HP 12V	9	3	230
NMP 830.1.2KPDC-B4 HP 24V	9	3	230

NMP 830.1.2KPDC-B HP

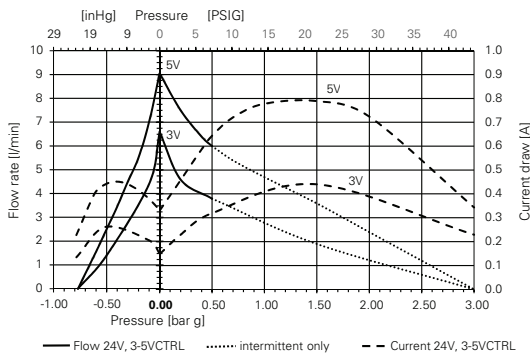


Dimensions in mm

NMP 830.1.2KPDC-B HP 12V



NMP 830.1.2KPDC-B HP 24V




OPTIONS

Description	Illustration	Part No.	Details
Motors			Other motor options are available. Ask your KNF sales contact to find the best solution for you.
Connecting plate			DN4/6 connecting plate M5 inside thread UNF 1/4" - 28 inside thread
Eccentric			Other eccentricities are available to meet your operating point best.

ACCESSORIES

Description	Illustration	Part No.	Details
Silencer		024805	For hose barbs
Silencer		314005	For DN4/6 connecting plate
Mounting plate		164313	Hole distance 43x22mm. Inner diameter of the sleeve is 3.5 mm, screws are not included. Single head pumps only.

SPARE PARTS

Description	Illustration	Part No.	Details
Spare part kit for KP version		317273	One Kit per head containing valve, O-Ring and Diaphragm. For a double head pump two kits are required.

The performance values for the series models shown on this data sheet were determined under test conditions. The actual performance values may differ and depend in particular on the usage conditions and therefore on the specific application, on the parameters of the components involved in the user's system and on any technical modifications carried out which deviate from the standard configuration or the as delivered condition.

If individual designs have been created for specific customers on the basis of series models, other technical performance data may apply. Before operation begins, the relevant operating instructions and/or assembly or installation instructions should be read and the safety information contained in these instructions should be noted. KNF reserves the right to make changes to the product and the associated documentation without prior notice to the customer.



www.knf.com