

Diaphragm metering pump

SIMDOS®

Installation of LabVIEW driver for SIMDOS RCP



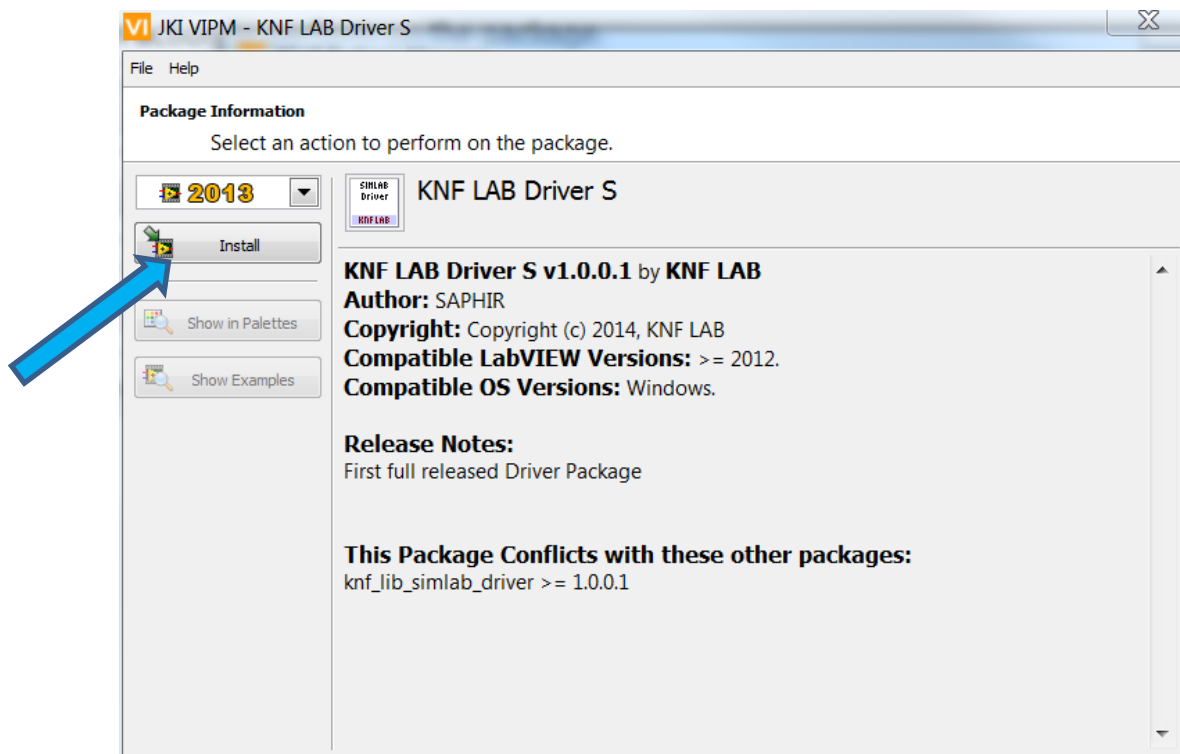
Abstract - The provided LabVIEW driver hides the details of communication and allows access to the functions of the pump on an intuitive base. For introduction, it provides some straightforward examples directly accessible from within LabVIEW.

Licence

The driver is published under the Lesser GNU public licence version 3.0, LGPLv3. A copy of the licence agreement is contained in the installation archive under licences.

Installation

- 1) Requirements
 - a. Download the latest version of VI package manager VIPM from JKI <http://jki.net/vipm> and install it.
- 2) Installation
 - a. Double click ***knf_lab_driver_s-1.0.0.xx.vip*** to start the installation process
 - b. In the appearing window containing the package information click **Install**



Before operating the pump, read the operating instructions (www.knf.com/downloads) and safety precautions.



Diaphragm metering pump

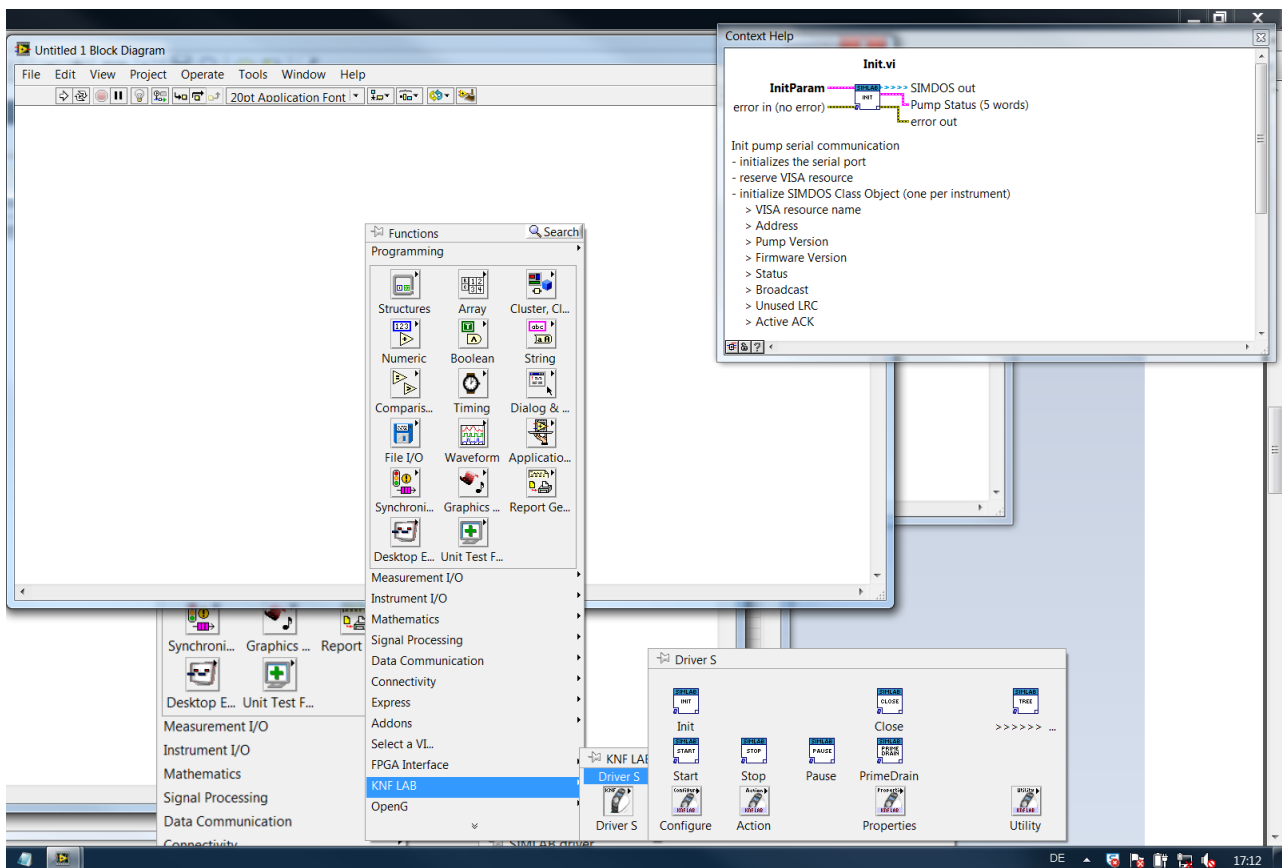
SIMDOS® 02

Application note AN001: SIMDOS RCP on RS485 bus



Usage

- 1) Start LabVIEW and create a new or open an existing VI
- 2) Switch to block diagram view
- 3) Open the function palette by activation of the context menu (click right mouse button)
- 4) The necessary VI to control the pump are available under menu item KNF LAB





Getting started

The usage of the KNF LAB collection of VI is explained by some examples.

- 1) Open LabVIEW's help menu
- 2) Select: Find examples
- 3) Change to Search tab
- 4) Enter into the keywords field: KNF
- 5) Select an appropriate example from the matching results

