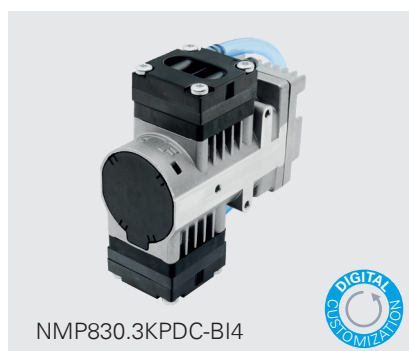
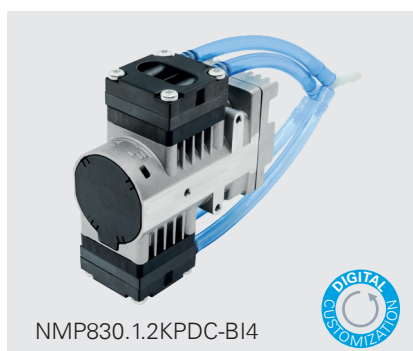


NMP830 DOUBLE-HEAD SERIES MICRO DIAPHRAGM GAS PUMPS



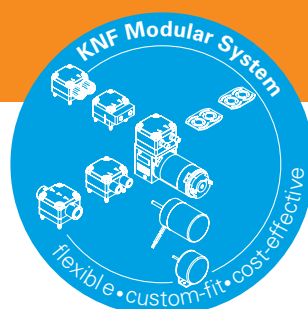
ADVANTAGES

- Customizing available
- Tested to customers specs
- High performance to size, efficiency and weight ratio
- Excellent reliability/durability
- Speed controllable
- Low sound level
- Long service life
- Uncontaminated transfer
- Maintenance-free
- High chemical resistance
- FDA listed parts available

POSSIBLE AREAS OF USE

- Medical devices
- Analytical equipment
- Emission measurement
- Reprographic
- Degassing
- Safety/Security

Please visit our website
www.knf.com
to get more information.



PERFORMANCE DATA

Series Model	NMP830.1.2	NMP830.3
Material design	KPDC-BI4	KPDC-BI4
Pump head	PPS	PPS
Diaphragm	EPDM (FKM and PTFE on request)	EPDM (FKM and PTFE on request)
Valves/Sealing	EPDM (FKM and FFKM on request)	EPDM (FKM and FFKM on request)
Flow rate at atm. pressure (l/min)	5.6	2.9
Ultimate vacuum (mbar abs.)	230	55
Ultimate pressure (bar rel)	1.5	-
Permissible media and ambient temperature (° C / ° F)	+5° C to +40° C / 41° F to 104° F (extended temperature on request)	
Weight (g/oz)	254/8.95	248/8.74

ELECTRICAL DATA

	NMP830.1.2		NMP830.3	
	12	24	12	24
Voltage (V)	12	24	12	24
Motor	Integrated brushless DC, 4 wire (2 wire on request)		Integrated brushless DC, 4 wire (2 wire on request)	
I _{max} (A)	1.10	0.60	0.80	0.45

OPTIONS			
Description	Illustration	Part No.	Details
Motors			Other motor options are available. Ask your KNF sales contact to find the best solution for you.
Connecting plate			DN4/6 connecting plate M5 inside thread UNF 1/4".-28 inside thread
Eccentric			Other eccentricities are available to meet your operating point best.

ACCESSORIES			
Description	Illustration	Part No.	Details
Silencer		024805	For hose barbs and Y-connector
Silencer		314005	For DN4/6 connecting plate
Rubber-bonded metal		On request	

SPARE PARTS			
Description	Illustration	Part No.	Details
Spare part kit NMP830KP NMP830KV NMP830KT		326908 120805 120806	One kit per head containing valve, O-Ring and Diaphragm. For a double head pump two kits are required.



DIGITAL CUSTOMIZATION

Thanks to digital technology, this pump can be quickly adapted to the customer's system. This is done by parametrizing the firmware of the integrated brushless motor at KNF.

The performance values for the series models shown on this data sheet were determined under test conditions. The actual performance values may differ and depend in particular on the usage conditions and therefore on the specific application, on the parameters of the components involved in the user's system and on any technical modifications carried out which deviate from the standard configuration or the as delivered condition.

If individual designs have been created for specific customers on the basis of series models, other technical performance data may apply.

Before operation begins, the relevant operating instructions and/or assembly or installation instructions should be read and the safety information contained in these instructions should be noted.

KNF reserves the right to make changes to the product and the associated documentation without prior notice to the customer.



www.knf.com