

N 0150 AND N 0150.3 SERIES EXPLOSION PROOF PUMPS



N 0150 ST.9 E Ex



N 0150.3 ST.9 E Ex

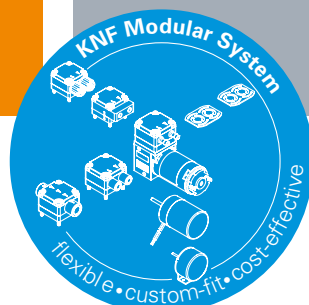
ADVANTAGES

- High chemical resistance
- Durable even with difficult operating conditions
- High level of gas tightness: approx. 6×10^{-3} mbar l/s
- High level of performance in a compact size

POSSIBLE AREAS OF USE

- Environmental monitoring – especially in potentially explosive fields
- Process industry
- Chemical industry
- Energy technology
- Maritime – especially for engine monitoring and emission measurement

Please visit our website
www.knf.com
to get more information



PERFORMANCE DATA				
Series model	N 0150		N 0150.3	
Material design	ST.9 E Ex		ST.9 E Ex	
Pump head	Stainless steel			
Diaphragm	PTFE-coated			
Valves	Stainless steel			
Flow rate at atm. pressure (l/min)	100 @50 Hz		100 @50 Hz	
Ultimate vacuum (mbar abs.)	130		30	
Max. operating pressure (bar rel./psig)	1.0/14.5		0.5/7.3	
Permissible ambient temperature (°C)	+5 ... +40			
Permissible media temperature (°C)	+5 ... +40			
Weight (kg/lbs)	67.0/147.71			
ELECTRICAL DATA				
Voltage (V)	230/400	200/346	200/346	220/380
Motor	Three-phase motor			
Protection class motor	IP 55			
Protection class pump	IP 20			
Frequency (Hz)	50	50	60	60
Power P ₂ (W)	1100			
Explosion protection three-phase motor	Ex II 2G Ex db eb IIC T4 Gb			
I _N (A)	4.6/2.65	5.31/3.06*	5.14/2.97*	4.67/2.70*
Explosion protection pump parts	Ex II 2/2G Ex h IIB+H2 T3 Gb			

*Theoretical value, changes possible

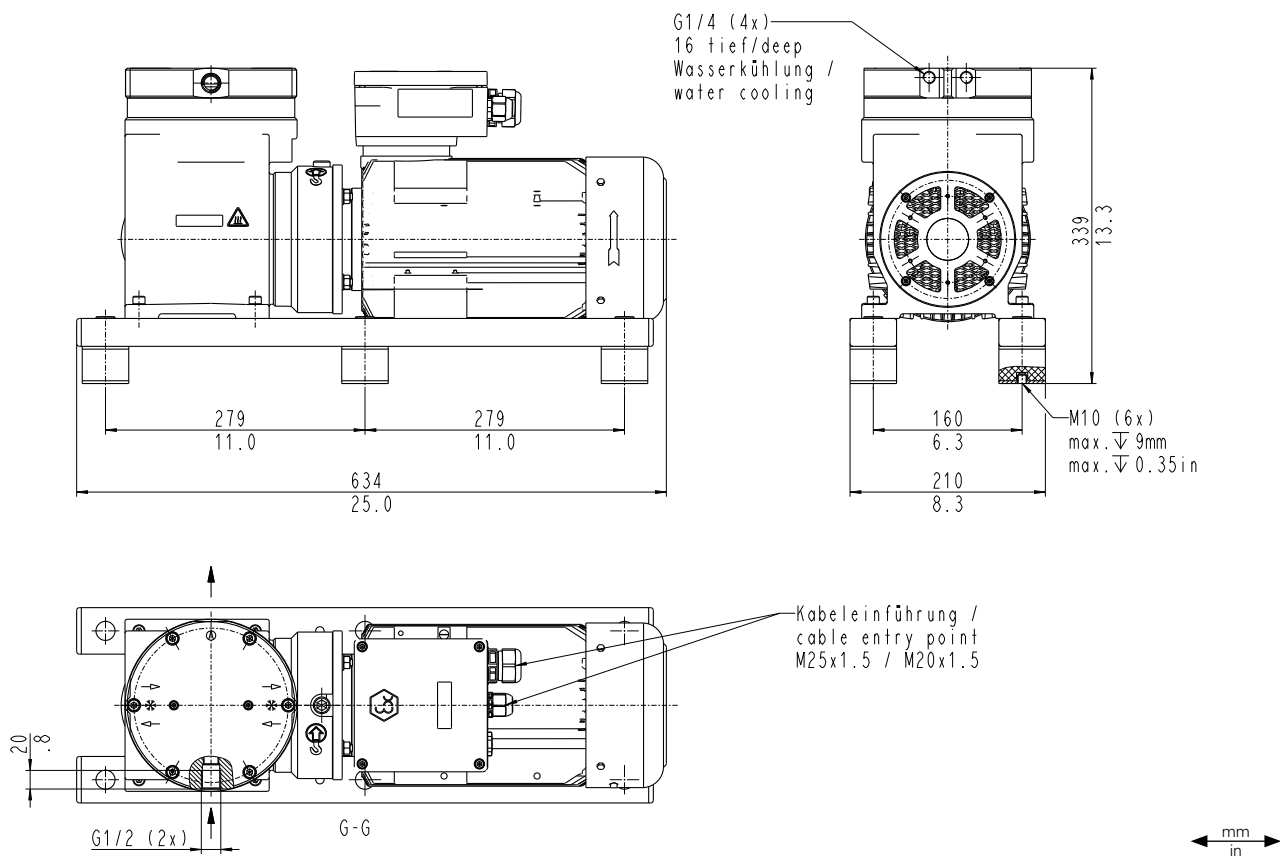
N 0150 ST.9 E EX

PERFORMANCE DATA

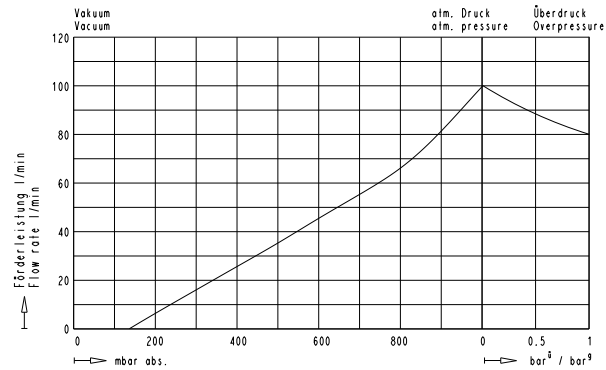
Series model	Flow rate at atm. pressure (l/min) ¹⁾	Max. operating pressure (bar rel./psig)	Ultimate vacuum (mbar abs.)
N 0150 ST.9 E Ex	100 @50 Hz	1.0/14.5	130

¹⁾ Flow rate determined at 20 °C, 1013 mbar abs
(Pressure 0 to 1013 mbar abs in accordance with ISO 21360-1/2)

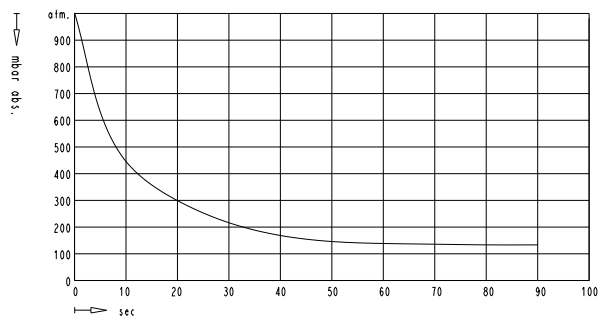
N 0150 ST.9 E EX



N 0150 ST.9 E EX



N 0150 ST.9 E EX | PUMP DOWN TIME FOR 20 LITER VESSEL



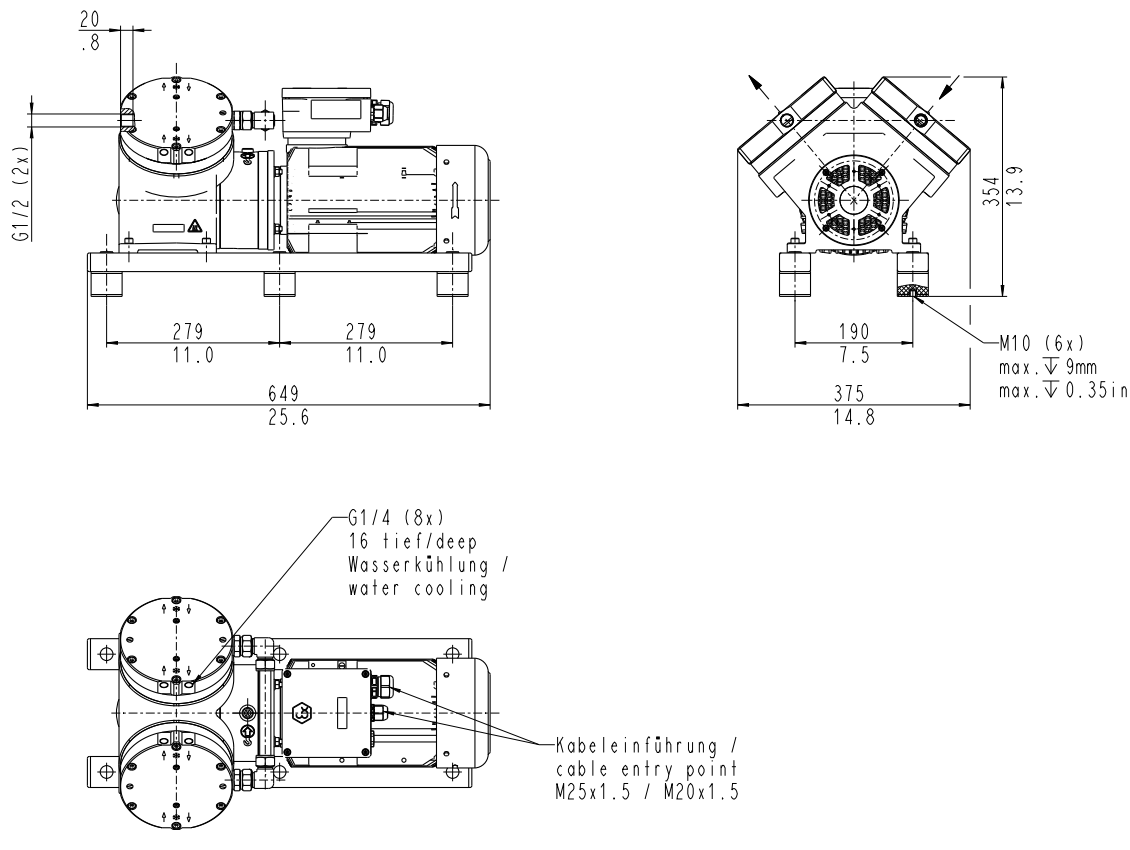
N 0150.3 ST.9 E EX

PERFORMANCE DATA

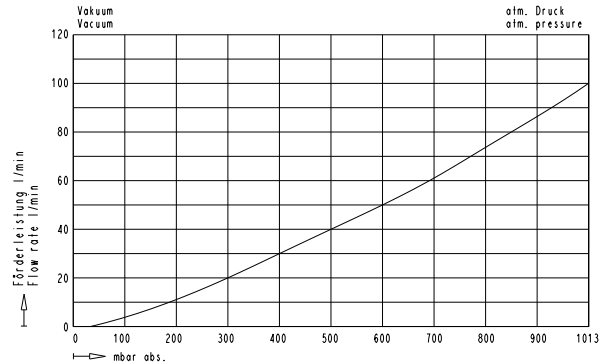
Series model	Flow rate at atm. pressure (l/min) ¹⁾	Max. operating pressure (bar rel./psig)	Ultimate vacuum (mbar abs.)
N 0150.3 ST.9 E Ex	100 @50 Hz	0.5/7.3	30

¹⁾ Flow rate determined at 20 °C, 1013 mbar abs
(Pressure 0 to 1013 mbar abs in accordance with ISO 21360-1/2)

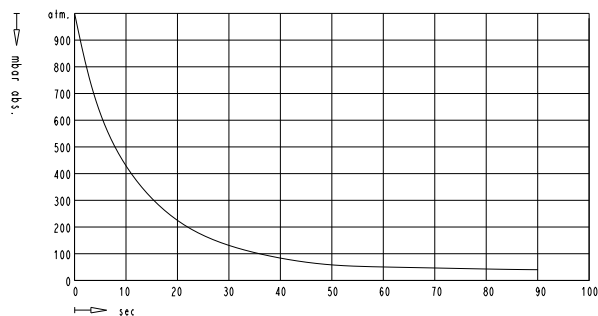
N 0150.3 ST.9 E EX









N 0150.3 ST.9 E EX







N 0150.3 ST.9 E EX | PUMP DOWN TIME FOR 20 LITER VESSEL



OPTIONS

Description	Illustration	Details
Mechanical adjustment of pumping capacity for N 0150 Ex and N 0150.3 Ex	 A circular gauge with a needle pointing to the center, labeled 'FLOW' below it.	The pumping capacity can be adjusted at the factory to accommodate inlet pressure and for accurate alignment with the customer's system.
Versions for special gases	 A blue rectangular box with the text 'CORROSION RESISTANT' in white capital letters.	Adjustment of the pump head for use with highly corrosive gases. Options include Hastelloy pump head components or a coating.
Cleaned contact material parts	 A line drawing of a pump head being cleaned by a spray nozzle.	For the use of the pump with gases with high oxygen concentrations the parts that come into contact with the medium can be cleaned using a certified process.
Special coating	 A line drawing of a spray gun applying a coating to a surface.	Special coatings for high corrosion protection (C4) for use in industrial areas and coastal areas with moderate salinity, such as maritime applications.
Certified head components	 A line drawing of a document with a checkmark and a pump head.	The components that come into contact with the medium are available with material certificates.
Country-specific Ex certificates	 A globe with a yellow hexagonal warning symbol containing the text 'Ex'.	Pumps with certificates for NEC Ex, KOSHA, PESO, NEPSI and JIS are also available.

ACCESSORIES

Description	Illustration	Part No.
Connection water cooling device N 0150 ST.9 E Ex		305998
Connection water cooling device N 0150.3 ST.9 E Ex		306765
Transport eyebolt		311535
Inlet filter G1/2		316662
Wrench for retainer plate		128753

SPARE PARTS

Description	Part No.
Spare parts kit N 0150 ST.9 E Ex	321947
Spare parts kit N 0150.3 ST.9 E Ex	321948

The performance values for the series models shown on this data sheet were determined under test conditions. The actual performance values may differ and depend in particular on the usage conditions and therefore on the specific application, on the parameters of the components involved in the user's system and on any technical modifications carried out which deviate from the standard configuration or the as delivered condition.

If individual designs have been created for specific customers on the basis of series models, other technical performance data may apply. Before operation begins, the relevant operating instructions and/or assembly or installation instructions should be read and the safety information contained in these instructions should be noted. KNF reserves the right to make changes to the product and the associated documentation without prior notice to the customer.



www.knf.com