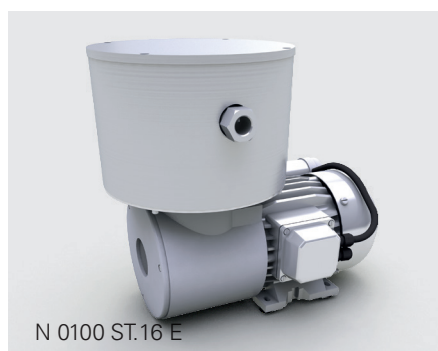


N 0100 SERIES

TEMPERATURE-RESISTANT GAS SAMPLING PUMPS



N 0100 ST.16 E

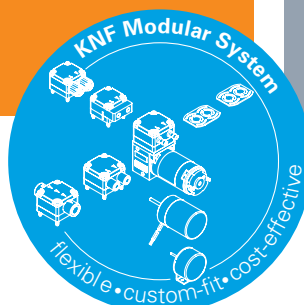
ADVANTAGES

- Temperature-resistant for transferring hot process gases up to 240 °C
- Heated head option (.17) on request available. Please refer to option section
- High chemical resistance
- Homogeneous temperature distribution throughout the entire pump head
- No condensation in the pump head

POSSIBLE AREAS OF USE

- Environmental monitoring – especially motor test benches in automobile industry
- Analytical technology
- Research

Please visit our website
www.knf.com
to get more information



PERFORMANCE DATA

Series model	N 0100	
Material design	AT.16 E	ST.16 E
Pump head	Aluminum	Stainless steel
Diaphragm	PTFE	
Valves	PTFE	
Flow rate at atm. pressure (l/min) ¹⁾	100.0	
Ultimate vacuum (mbar abs.)	180	
Max. operating pressure (bar rel./psig) ²⁾	1.5/21.8	
Permissible ambient temperature (°C)	+10 ... +40	
Permissible media temperature (°C)	+5 ... +240	
Weight (kg/lbs)	21.0/46.3	28.0/61.7

ELECTRICAL DATA

Voltage (V)	230	220	115	100
Motor	Capacitor motor			
Protection class motor	IP 44			
Frequencies (Hz)	50	60		50/60
Power P ₁ (W)	450		430	450
I _{max} (A)	3.0	3.2	5.6	6.5

¹⁾ Liter in the standard state (based on ISO 8788 and ISO 21360-1/2) (1000 hPa, 20°C); ²⁾ bar relative to 1000 hPa;

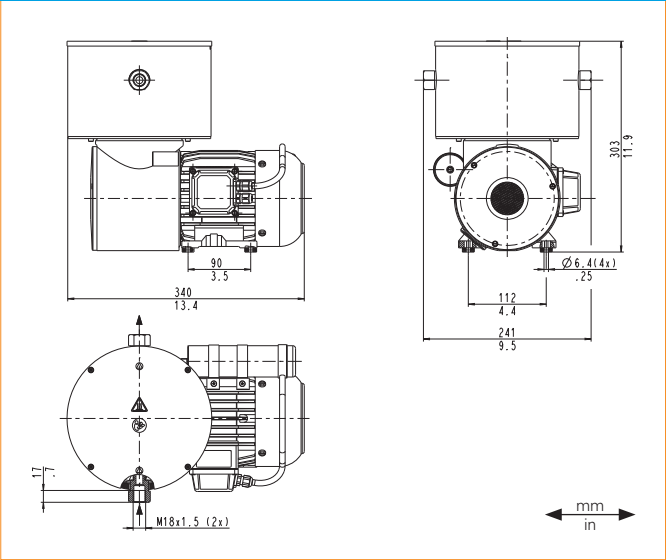
N 0100 AT.16 E | ST.16 E

PERFORMANCE DATA

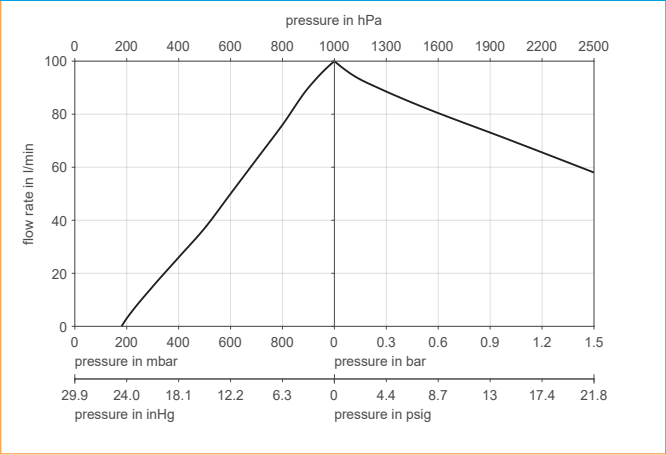
Series model	Flow rate at atm. pressure (l/min) ¹⁾	Max. operating pressure (bar rel./psig) ²⁾	Ultimate vacuum (mbar abs.)
N 0100 AT.16 E	100.0	1.5/21.8	180
N 0100 ST.16 E	100.0	1.5/21.8	180

¹⁾ Liter in the standard state (based on ISO 8788 and ISO 21360-1/2) (1000 hPa, 20°C); ²⁾ bar relative to 1000 hPa;




N 0100 _T.16 E



N 0100 _T.16 E



OPTIONS

Description	Illustration	Details
Rotated pump housing		The pump housing may be rotated by 180° at the factory. Any condensate will drain from the pump head, which improves the function of the pump when operating with high condensate concentrations.
Customized head connectors		The height of the remote pump head can be adapted to the customer's system according to the project. NPT1/8 fittings and various other fittings are optional.
Flanged version		This configuration has been designed for installation on a heated analyzer cabinet. The pump is mounted by a flange on the outside of the cabinet housing. The pump head then protrudes into the hot area. The area between the pump head and the compressor housing can be insulated.
ATEX		Pumps for explosion-proof areas are available with the following certificates on request: ATEX, IECEx, KOSHA, PESO, NEPSI.
Heated version (.17)		Head temperature can be controlled by the customer with optional heater cartridge and PT100 sensor.

ACCESSORIES

Description	Part No.
Wrench for retainer plate	020204

SPARE PARTS

Description	Illustration	Part No.	Details
Spare parts kit N 0100.16		120782	Spare parts kit consists of: 1x diaphragm (3-fold), 2x valve plate, 2x O-ring. This set is required to maintain the pump.

The performance values for the series models shown on this data sheet were determined under test conditions. The actual performance values may differ and depend in particular on the usage conditions and therefore on the specific application, on the parameters of the components involved in the user's system and on any technical modifications carried out which deviate from the standard configuration or the as delivered condition.

If individual designs have been created for specific customers on the basis of series models, other technical performance data may apply. Before operation begins, the relevant operating instructions and/or assembly or installation instructions should be read and the safety information contained in these instructions should be noted. KNF reserves the right to make changes to the product and the associated documentation without prior notice to the customer.



www.knf.com