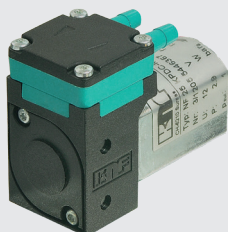
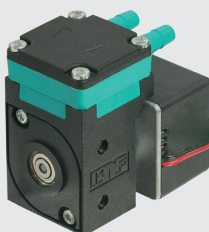


NF 25

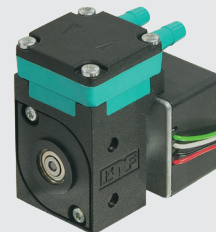
DIAPHRAGM LIQUID PUMP



NF 25 KPDC-M



NF 25 KPDCB



NF 25 KPDCB-4

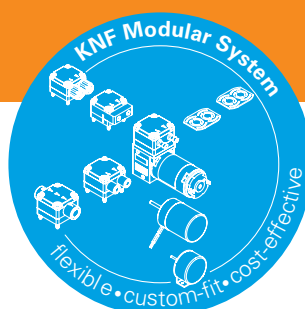
ADVANTAGES

- Small and powerful
- Self priming and excellent for pressure
- Extreme chemical resistance
- Dry running, durable and maintenance free

POSSIBLE AREAS OF USE

- Analysers
- Laboratory
- Cleaning industry
- Printing

Please visit our website
www.knf.com
 to get more information.



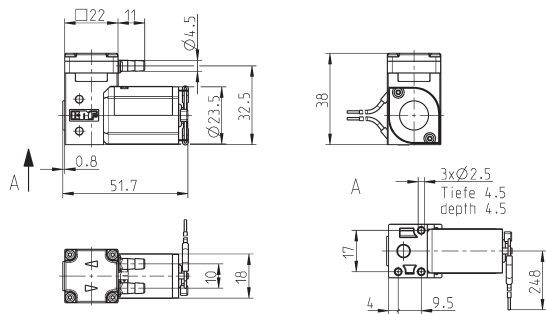
PERFORMANCE DATA				
Basic types	NF 25 DC-M		NF 25 DCB	NF 25 DCB-4
Material options	KP	KT	TT	
Pump head	PP	PP	PVDF	
Diaphragm	EPDM	PTFE	PTFE	
Valves	EPDM	FFKM	FFKM	
Flow rate (ml/min)	250			25 - 250
Suction height (mWg/inHg)	3/8.7			
Pressure head (mWg/psig)	10/14.2			
Permissible ambient temperature (°C/°F)	+5 to +40/+41 to +140			
Permissible liquid temperature (°C/°F)	+5 to +80/+41 to +176			
Weight (g/oz)	64/2.3		60/2.1	
IP protection factor	30		40	
ELECTRICAL DATA				
Operation voltage (V)	12 / 24		12 / 24	10 - 26.4
Power consumption (W)	2.9 / 2.9		2.8 / 2.9	2.9

NF 25 DC-M

PERFORMANCE DATA

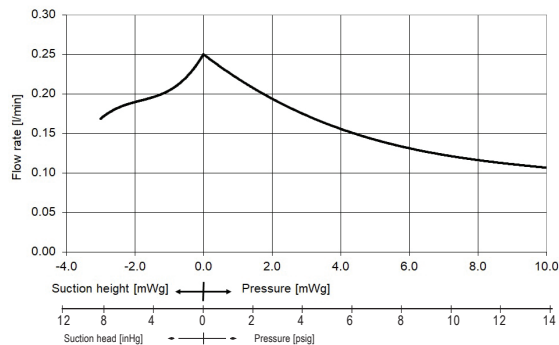
Series model	Flow rate at atm. pressure (ml/min)	Max. suction height (inHg)	Max. pressure head (psig)
NF 25 DC-M	250	8.7	14.2

NF 25 DC-M



Dimensions in mm

NF 25 DC-M FLOW CURVE

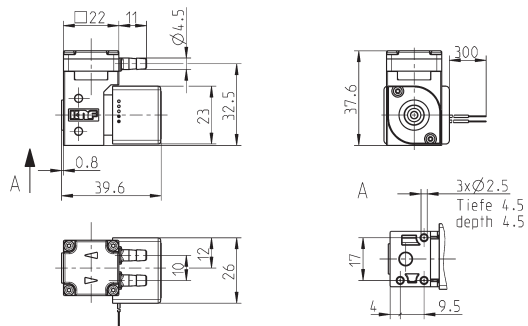


NF 25 DCB

PERFORMANCE DATA

Series model	Flow rate at atm. pressure (ml/min)	Max. suction height (inHg)	Max. pressure head (psig)
NF 25 DCB	25-250	8.7	14.2

NF 25 DCB



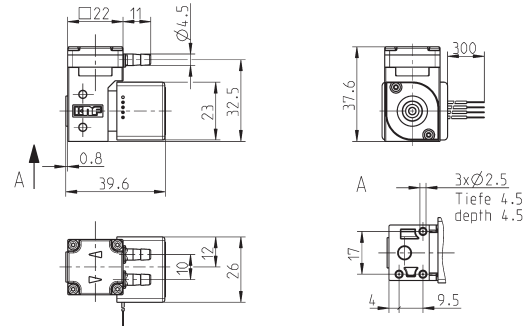
Dimensions in mm

NF 25 DCB-4

PERFORMANCE DATA

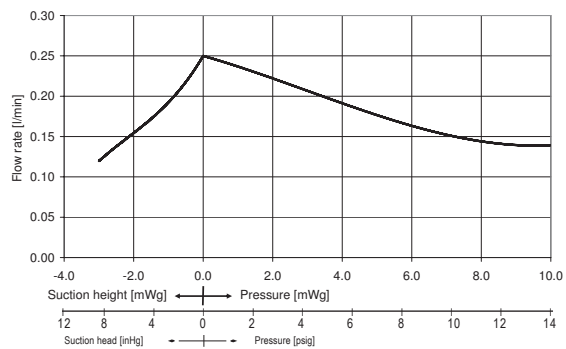
Series model	Flow rate at atm. pressure (ml/min)	Max. suction height (inHg)	Max. pressure head (psig)
NF 25 DCB-4	25-250	8.7	14.2

NF 25 DCB-4

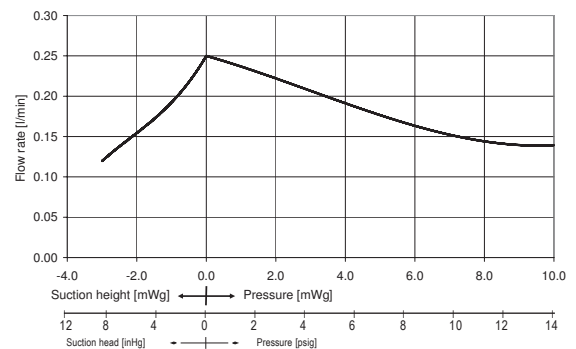


Dimensions in mm

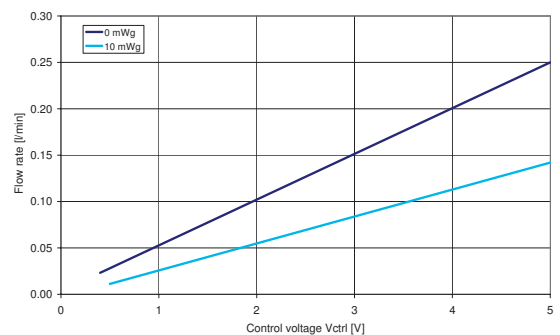
NF 25 DCB FLOW CURVE






NF 25 DCB-4 FLOW CURVE



NF 25 DCB-4 CONTROL CURVE







OPTIONS			
Description	Illustration	Part No.	Details
Motors			Various voltage options, higher and lower service life
Electrical connections			Molex, AMP etc.
Hydraulic connections			Internal thread, compression fittings, manifold connection etc.



DIGITAL CUSTOMIZATION

Thanks to digital technology, this pump can be quickly adapted to the customer's system. This is done by parametrizing the firmware of the motor at KNF.

ACCESSORIES/SPARE PARTS			
Description	Illustration		Details
Diaphragm pressure control valve			The pressure control valve can be used for a more accurate control of flow against a fluctuating back pressure, metering into a vacuum and from a pressurised system.
Pulsation damper			This very versatile pulsation damper reduces the vibration in hoses and pipes and it helps to remove pulsation which is preventing the system from functioning correctly.
Filter			KNF filters protect both pumps and other upstream instrumentation and hydraulic circuits against particulate, crystals and fibres which can improve optimum operation.
Tubing			Various diameters and materials

The performance values for the series models shown on this data sheet were determined under test conditions. The actual performance values may differ and depend in particular on the usage conditions and therefore on the specific application, on the parameters of the components involved in the user's system and on any technical modifications carried out which deviate from the standard configuration or the as delivered condition.

If individual designs have been created for specific customers on the basis of series models, other technical performance data may apply. Before operation begins, the relevant operating instructions and/or assembly or installation instructions should be read and the safety information contained in these instructions should be noted. KNF reserves the right to make changes to the product and the associated documentation without prior notice to the customer.



www.knf.com