

# NF 60

## DIAPHRAGM LIQUID PUMP



NF 60 KPDCB-4B



NF 60 KP .51DC

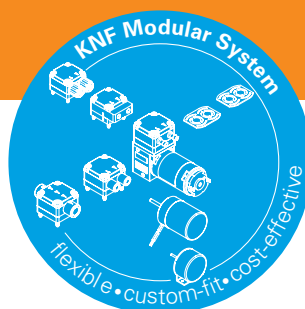
### ADVANTAGES

- Self priming and excellent for pressure
- Extreme chemical resistance
- Dry running, durable and maintenance free

### POSSIBLE AREAS OF USE

- Analysers
- Laboratory
- Cleaning industry
- Printing

Please visit our website  
[www.knf.com](http://www.knf.com)  
 to get more information.



### PERFORMANCE DATA

Series model	NF 60 E		NF 60 DC		NF 60 DCB-B	NF 60 DCB-4B
Material options	KP/KP .51*	KT	TT	FT		
Pump head	PP	PP	PVDF	PTFE		
Diaphragm	PTFE	PTFE	PTFE	PTFE		
Valves	EPDM	FFKM	FFKM	FFKM		
Resonating diaphragm	PTFE	PTFE	PTFE	PTFE		
Flow rate at atm. pressure (l/min)	0.6					
Suction height (mWg/inHg)	3/8.7					
Pressure head (mWg/psig)	10/14.2					
Permissible ambient temperature (°C/°F)	+5 to +40 / +41 to +140					
Permissible liquid temperature (°C/°F)	+5 to +80 / +41 to +176					

### ELECTRICAL DATA

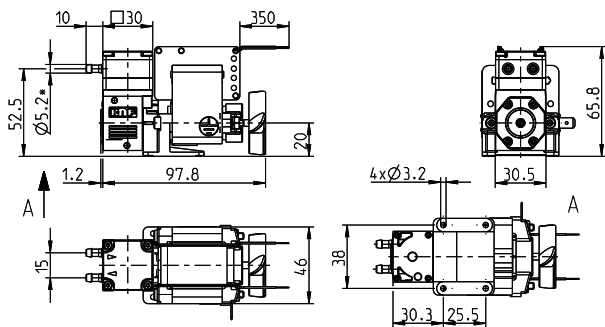
Operating voltage (V)	230 V/50 Hz	12/24	12/24	10-26.4
Power consumption (W)	26	8.3/8.6	7.7/7.9	9
I load max. (A)	0.21	0.69/0.36	0.64/0.33	0.74-0.32
IP protection factor	00	00	30	

# NF 60 E

## PERFORMANCE DATA

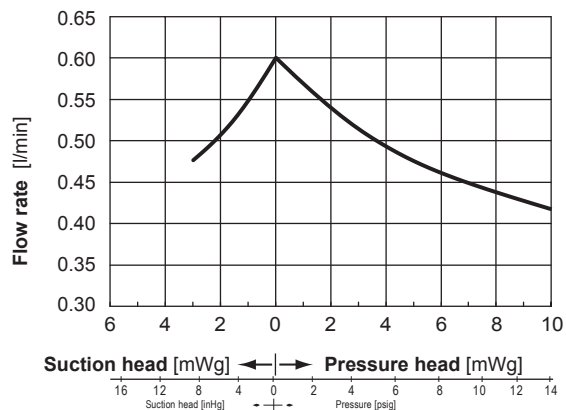
Series model	Flow rate at atm. pressure (l/min)	Max. suction height (inHg)	Max. pressure head (psig)
NF 60 E	0.6	8.7	14.2

### NF 60 E



Dimensions in mm

### NF 60 E FLOW CURVE

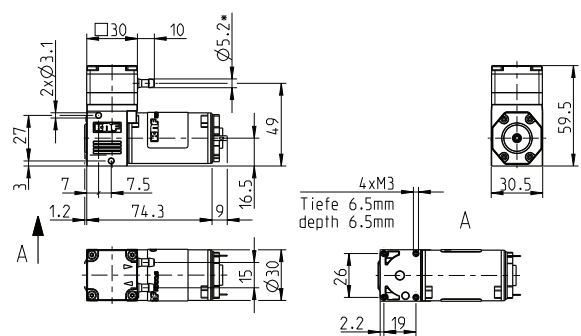


# NF 60 DC

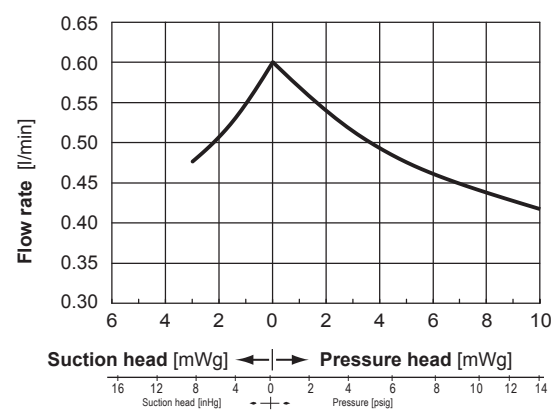
## PERFORMANCE DATA

Series model	Flow rate at atm. pressure (l/min)	Max. suction height (inHg)	Max. pressure head (psig)
NF 60 DC	0.6	8.7	14.2

### NF 60 DC



### NF 60 DC FLOW CURVE

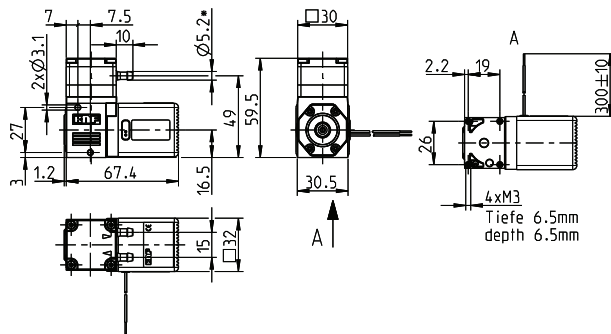


# NF 60 DCB-B

## PERFORMANCE DATA

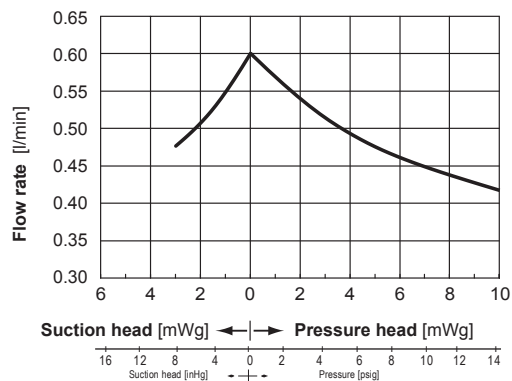
Series model	Flow rate at atm. pressure (l/min)	Max. suction height (inHg)	Max. pressure head (psig)
NF 60 DCB-B	0.6	8.7	14.2

## NF 60 DCB-B



Dimensions in mm

## NF 60 DCB-B FLOW CURVE

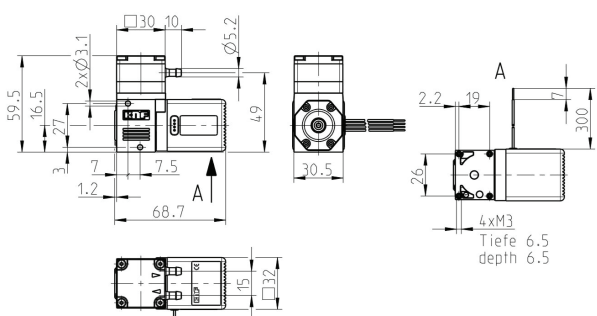


# NF 60 DCB-4B

## PERFORMANCE DATA

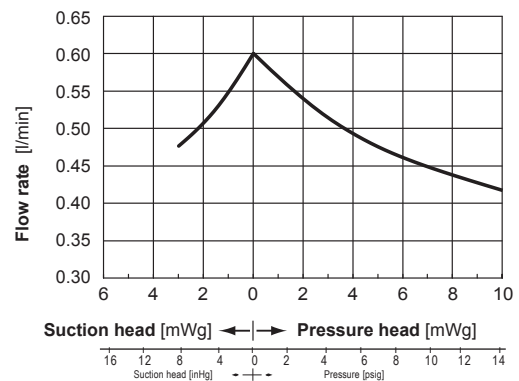
Series model	Flow rate at atm. pressure (l/min)	Max. suction height (inHg)	Max. pressure head (psig)
NF 60 DCB-4B	0.6	8.7	14.2

## NF 60 DCB-4B



Dimensions in mm

## NF 60 DCB-4B FLOW CURVE



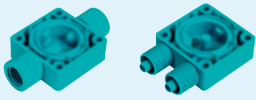


## ELECTRIC SPECIFICATIONS

Wires	AWG 24
Wires assignment	red = +VS black = - VS/GND

## ELECTRIC SPECIFICATIONS

Wires	AWG 24
Wires assignment	red = +VS black = - VS/GND white = Vctrl-input green = FG-output
Input signal	0-5 V

OPTIONS			
Description	Illustration	Part No.	Details
Motors with special voltages or frequencies			Various voltage options, higher and lower service life
Electrical connectors			Specific customers requirements such as special connections (Molex, AMP, etc.)
Different hydraulic connection types			Internal thread, compression fittings, manifold connection etc.







#### NSF National Sanitary Foundation

This certification will confirm that all of the pumps with the code .51 are certified for the use with foods/consumables.



#### DIGITAL CUSTOMIZATION

Thanks to digital technology, this pump can be quickly adapted to the customer's system. This is done by

ACCESSORIES/SPARE PARTS			
Description	Illustration	Part No.	Details
Fastening elements			Enabling additional mounting options
Diaphragm pressure control valve			The pressure control valve can be used for a more accurate control of flow against a fluctuating back pressure, metering into a vacuum and from a pressurised system.
Pulsation damper			This very versatile pulsation damper reduces the vibration in hoses and pipes and it helps to remove pulsation which is preventing the system from functioning correctly.
Filter			KNF filters protect both pumps and other upstream instrumentation and hydraulic circuits against particulate, crystals and fibres which can improve optimum operation.

The performance values for the series models shown on this data sheet were determined under test conditions. The actual performance values may differ and depend in particular on the usage conditions and therefore on the specific application, on the parameters of the components involved in the user's system and on any technical modifications carried out which deviate from the standard configuration or the as delivered condition.

If individual designs have been created for specific customers on the basis of series models, other technical performance data may apply. Before operation begins, the relevant operating instructions and/or assembly or installation instructions should be read and the safety information contained in these instructions should be noted. KNF reserves the right to make changes to the product and the associated documentation without prior notice to the customer.



[www.knf.com](http://www.knf.com)