

UNF 1.600 EX DIAPHRAGM LIQUID PUMP



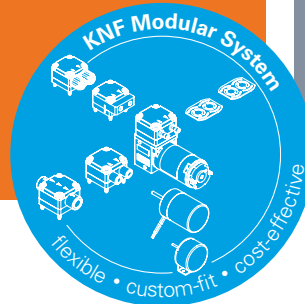
UNF 1.600 TT | EX

ADVANTAGES

- For use in Class 1, Div 1, Groups C&D hazardous location areas
- High pressure of 88 psig
- Self priming, dry running and durable
- High chemical resistance
- Low maintenance

POSSIBLE AREAS OF USE

- Solvent transfer
- Oil & Gas
- Chemical
- Analysis
- Pharmaceutical processes



Please visit our website
www.knf.com
to get more information

PERFORMANCE DATA

Series model	NF 1.600 EX	
Material options	KT	TT
Pump head	PP	PVDF
Diaphragm	PTFE	PTFE
Valves	FFKM	FFKM
Flow rate at atm. pressure (l/min)	6	
Suction height (mH ₂ O/ftH ₂ O)	3/10	
Pressure head (mH ₂ O/psig)	60/88	
Permissible ambient air (°C / °F)	5 - 40 / 41 - 104	
Permissible liquid temperature (°C / °F)	5 - 80 / 41 - 176	
Weight (kg/lbs)	14/30	
Maximum viscosity (cSt)	150	

ELECTRICAL DATA

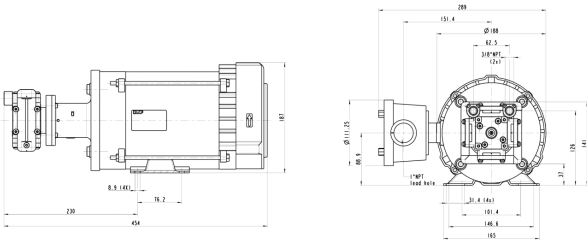
Operating voltage, frequency (V),(Hz)	115/230, 60		
Power consumption (W)	800		
I max. Start (A)	7.0/3.5		
HazLoc rating, temp code & certification	Class 1, Div 1, Groups C&D	T3B	UL / CSA

UNF 1.600 EX

PERFORMANCE DATA

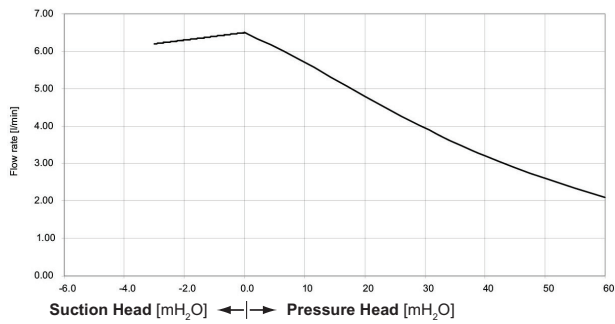
Series model	Flow rate at atm. pressure (l/min)	Max. suction height (mH ₂ O/ftH ₂ O)	Max. pressure head (mH ₂ O/psig)
UNF 1.600_T I EX	6	3/10	60/88

UNF 1.600 EX



Dimensions in mm


UNF 1.600 EX FLOW CURVE



OPTIONS

Description	Illustration	Part No.	Details
Motors			Various voltage and hazardous location area rating options
Hydraulic connections			G / NPT internal thread

ACCESSORIES

Description	Illustration	Part No.	Details
Pressure control valve			The pressure control valve can be used for a more accurate control of flow against a fluctuating back pressure, metering into a vacuum and from a pressurised system.
Pulsation damper			This versatile pulsation damper reduces the vibration in hoses and pipes and helps remove pulsation which can prevent the system from functioning correctly.

The performance values for the series models shown on this data sheet were determined under test conditions. The actual performance values may differ and depend in particular on the usage conditions and therefore on the specific application, on the parameters of the components involved in the user's system and on any technical modifications carried out which deviate from the standard configuration or the as delivered condition.

If individual designs have been created for specific customers on the basis of series models, other technical performance data may apply. Before operation begins, the relevant operating instructions and/or assembly or installation instructions should be read and the safety information contained in these instructions should be noted. KNF reserves the right to make changes to the product and the associated documentation without prior notice to the customer.



www.knf.com